



PERTH CITY LINK RAIL PROJECT

PROJECT PROFILE

Oct 2012 – Sept 2013

Detailed Scope Overview

RMC Rail was engaged by John Holland to undertake Track and Turnout construction on the PCRLA project. Scope Included:

- Supply of key rail personnel including Superintendent, Welding Supervisor, Fettleers and specialised teams.
- Manage shutdowns & delivery of scope in consultation with other disciplines and key stakeholders.
- Track construction in Perth Yard West and East.
- 1200mtrs of Up and Down mains, 1 x Diamond Crossing, 1x Similarflexturn Turnout, and 6 x 1:10 Swing nose crossings.

Project Challenges

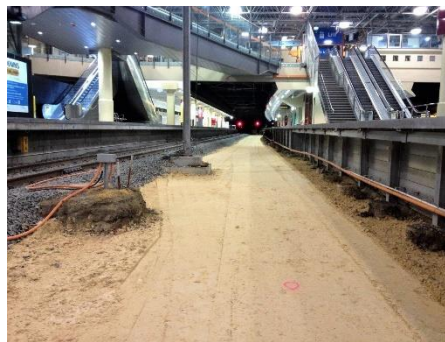
The Project was undertaken in a very constricted site with multidiscipline portions of overall Project scope. Key challenges includes:

- Inner city working and management of bulky rail material logistics.
- Interface management between disciplines.
- Working in part closed platform areas during service hours
- Working under overhead lines

Innovative Ideas

RMC Rail devised various ways to decrease build time and handback track in time to allow overheads and signals commissioning such as fully welded Turnouts lifted into place over insitu builds, active use of onsite survey to achieve Q/A passes earlier where possible.

RMC Rail also assisted in the selection of welding processes that were used on the project.



Value Adding

RMC Rail assisted in managing the bulk of materials arriving on site and their offsite Q/A checks prior to installation. This involved prebuild of Turnouts to check componentry, facilitation of IRJ testing through due process to ensure no failures in Track.

RMC Rail also played a key role in planning and the strategic delivery of LWR on very undulating terrain through the site

Multi Skilled Teams allowed multiple work fronts and flexibility to adjust programs.



FAST FACTS

\$3 Million

of overall Project Value

2.4KM Track

7 x Turnouts

Scope Achieved

0 Train Cancellations

Achieved Stretch Program Targets

CLIENT REFERENCE

Dion Di Crescenzo
Rail Manager